

# The chemical composition of Amazonian plants<sup>(\*)</sup>

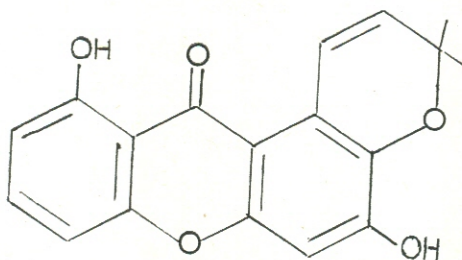
A Catalogue, edited by Setor de Fitoquímica, INPA, Manaus, Amazonas

FAMILY :  
Guttiferae

SPECIES :  
*Tovomita choisyana* Pl. & Tr.

OCCURRENCE : Belém, Pará

TRUNK WOOD :  
tovoxanthone (3, 8 - dihydroxy - 6', 6' - dimethylpyrano - (2', 3 : 2, 1) - xanthone).



REFERENCE :

S. J. Gabriel and O. R. Gottlieb, *An. Acad. brasil. Ciênc.*, 42, 115 (1970).

FAMILY :  
Podocarpaceae.

SPECIES :  
*Podocarpus selowii* Klotzsch  
"pinheirinho bravo"

OCCURRENCE : Amazonia, Atlantic Forest.

BARK :

totarol (I)<sup>1</sup>  
macrophylllic acid (II)<sup>1</sup>  
the norditerpene dilactone (III)<sup>1</sup>  
the norditerpene dilactone (IV)<sup>1</sup>

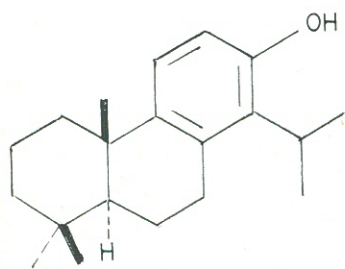
LEAVES AND WOOD :

nagilactone C (V)<sup>2</sup>  
sellowin A (VI)<sup>2</sup>  
sellowin B (VII)<sup>2</sup>  
sellowin C (VIII)<sup>2</sup>  
ponasterone A (IX)<sup>2</sup>  
sequoyitol (X)<sup>2</sup>

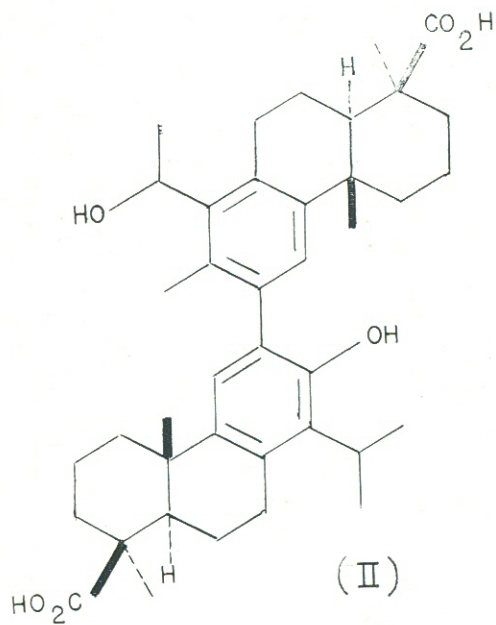
REFERENCES :

1. E. Wenkert, D. J. Watts and J. P. Campello, XXII Annual Meeting, Sociedade Brasileira para o Progresso da Ciência, Salvador, Bahia (1970).
2. W. E. Sánchez L., K. S. Brown Jr., T. Nishida, L. J. Durham and A. M. Duffield, *An. Acad. brasil. Ciênc.*, 42 (Suppl.), 77 (1970).

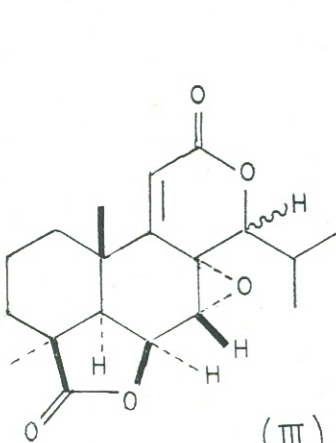
(\*) — Contributions to this catalogue, which will be continued in subsequent issues of this Journal, are invited, and should be submitted to the address given above.



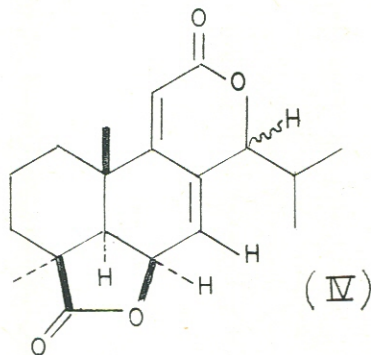
(I)



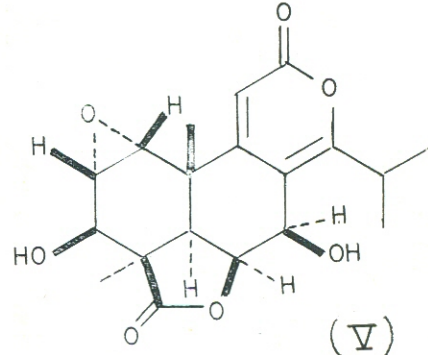
(II)



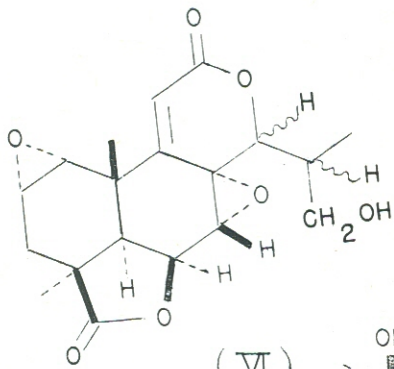
(III)



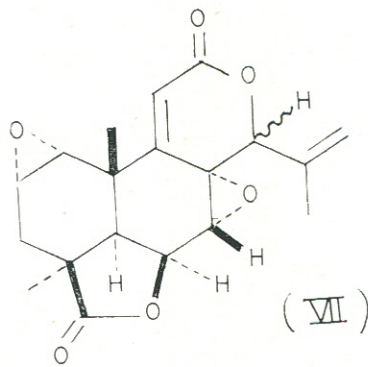
(IV)



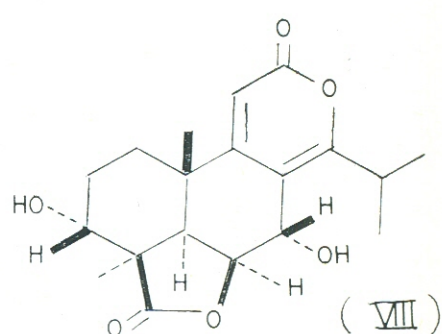
(V)



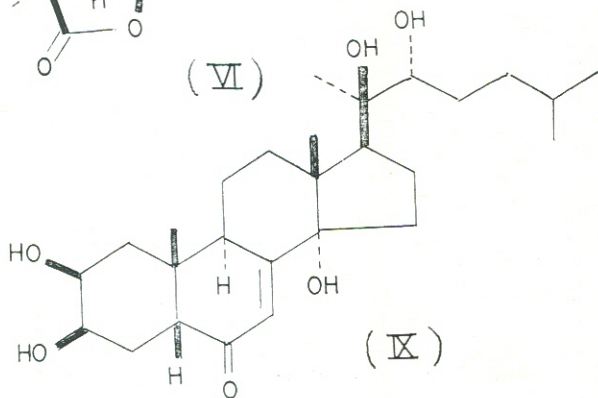
(VI)



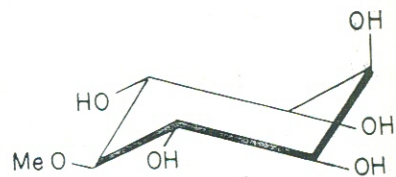
(VII)



(VIII)



(IX)



(X)



**FAMILY :**

Compositae

**SPECIES :**

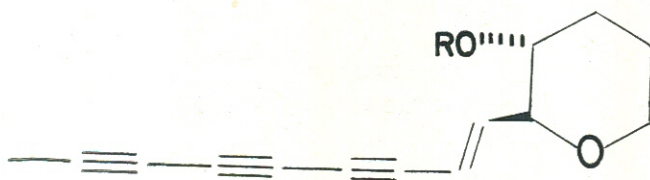
*Ichthyothere terminalis* (Spreng.) Malme  
"cunambí"

**OCCURRENCE :** lower Amazon basin.

**LEAVES :**

ichthyothereol (Ia)

ichthyothereol acetate (Ib)



Ia R = H

b R = Ac

**REFERENCE :**

S. C. Cascon, W. B. Mors, B. M. Tursch, R. T. Apliri and L. J. Durham, *J. Am. Chem. Soc.*, 87, 5237 (1965).

**FAMILY :**

Leguminosae - Mimosoideae

**SPECIES :**

*Anadenanthera peregrina* (L.) Speg.  
[= *Piptadenia peregrina* (L.) Bth.]  
"paricá", "angico"

**OCCURRENCE :** widespread in Amazonia

**LEAF :**

N, N - dimethyltryptamine<sup>1</sup>

5 - methoxy - N, N - dimethyltryptamine<sup>1</sup>

N - methyltryptamine<sup>1</sup>

**BARK :**

5 - methoxy - N, N - dimethyltryptamine<sup>1</sup>

5 - hydroxy - N, N - dimethyltryptamine<sup>1</sup>

5 - methoxy - N - methyltryptamine<sup>1</sup>

N, N - dimethyltryptamine<sup>1</sup>

2 - methyl 6 - methoxy - 1, 2, 3, 4 - tetrahydrocarboline<sup>1</sup>

1, 2 - dimethyl - 6 - methoxy - 1, 2, 3, 4 - tetrahydrocarboline<sup>1</sup>

N - methyltryptamine<sup>1</sup>

**SEED :**

N, N - dimethyltryptamine<sup>2</sup>  
N, N - dimethyltryptamine - N - oxide<sup>2</sup>  
5 - hydroxy - N, N - dimethyltryptamine (bufotenine)<sup>2,3</sup>  
5 - hydroxy - N, N - dimethyltryptamine - N - oxide<sup>2</sup>

**REFERENCES :**

1. S. Agurell, B. Holmstedt, J. E. Lingren and R. E. Schultes, *Acta. Chem. Scand.*, 23, 903 (1969).
2. M. S. Fish, N. M. Johnson and E. C. Horning, *J. Am. Chem. Soc.*, 77, 5892 (1955).
3. V. L. Stromberg, *J. Am. Chem. Soc.*, 76, 1707 (1954).

**FAMILY :**

Lauraceae

**OCCURRENCE :** Amazonia.

**SPECIES :**

*Aniba hostmanniana* (Nees) Mez

**TRUNK WOOD :**

essential oil (1,3%)

terpenes (0,5%)

2, 4, 5 - trimethoxy - allylbenzene (98,6%) (I)

N - [ $\beta$  - (4 - methoxyphenyl) - ethyl] - 3, 4, 5 - trimethoxycinnamamide (II)

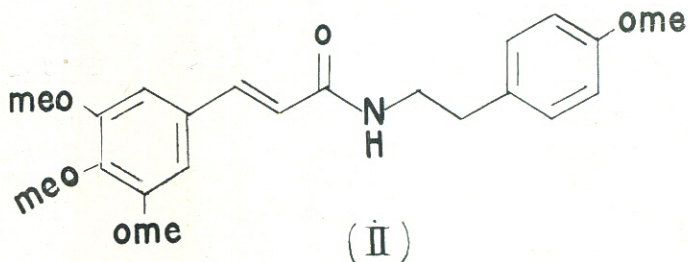
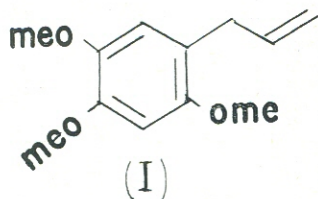
**BARK :**

essential oil (0,8%)

terpenes (1,3%)

methyl Eugenol (0,3%)

2, 4, 5 - trimethoxy - allylbenzene (94,5%) (I)



**REFERENCE :**

O. R. Gottlieb and A. I. da Rocha, *Phytochem.*, 11, 000 (1972).